

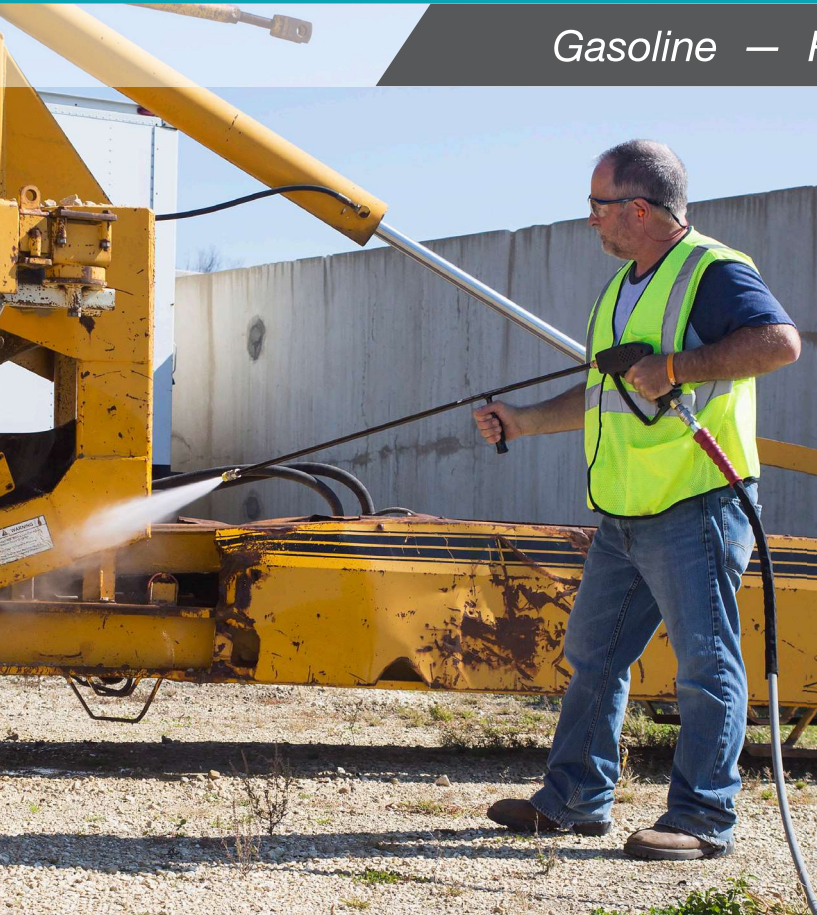


Clean Rite
Equipment & Environmental

Premium Series

Dealer Cold Water
Pressure Washers

Gasoline — Portable with Roll Cage — Belt Drive



DC-5004-WC4H6A

One of the most robust cold water pressure washers on the market today, this pressure washer is equipped with a rugged roll cage making it the ideal choice for industrial jobsites where heavy-duty cleaning is a daily requirement.

Pump:

Belt drive triplex piston AR or General pump with ceramic plungers | External bypass system allows more water into the system to protect from heat build-up | Forged brass manifold | Thermal and safety relief valves | Water filter with clear sleeve for screen inspection (High capacity water filter on DC-3008-WC4H6G)

Frame:

Powder coated steel frame with 1¼-inch roll cage, handles and lifting hook | 13-inch flat-free tires with locking tire brake | Two-piece belt guard

Engine:

Performance-proven Honda OHV engine with low-oil shutdown

Components:

Fuel tank has powder coated outside and aluminized steel inside to prevent rusting | 13-gallon fuel tank capacity for 9½ hour run time

Unit Includes:

Quick connect nozzles - 0°, 15°, 25° and 40° | 50-foot x ⅝-inch non-marking high pressure hose (½-inch on DC-3008-WC4H6G) | 48-inch lance with rubber grip | Professional-grade insulated trigger gun with safety lock-off



DC-5004-WC4H6A
DC-5004-WC4H6G
DC-5005-WC4H6G